

**PACIFIC
STANDARD
TIME:**
ART IN L.A. 1945-1980

Image Selections

Images included below represent a selection of image available from participating exhibitions.

Please note: The use of the press images should be only for articles, notices and reviews about Pacific Standard Time, and related exhibitions and programs. Any other editorial or commercial use must be negotiated directly with the individual institution.

For high-resolution images, please contact:

Whitney Snow at Ruder Finn Arts & Communications Counselors
snoww@ruderfinn.com / 212.583.2743

Rachel Bauch at Ruder Finn Arts & Communications Counselors
bauchr@ruderfinn.com / 310.882.4013

18th Street Arts Center

Collaboration Labs: Southern California Artists and the Artist-Space Movement

September 24, 2011 – December 17, 2011



Caption: *In Mourning and in Rage*, 1977, Leslie Labowitz Starus and Suzanne Lacy. Media intervention performance (Los Angeles). Photograph by Maria Karras. Courtesy of artist

A + D Architecture and Design Museum

Eames Designs: The Guest-Host relationship

Exhibition Dates: October 1, 2011 – January 16, 2012



Caption: La Chaise, 1948, date of this example, 1996, Charles Eames and Ray Eames, manufactured by Vitra. Plastic, steel, wood. 34 1/4 x 59 x 35 1/2 in. Photograph by Grant Taylor/JF Chen. © Eames Office LLC.

American Museum of Ceramic Art (AMOCA)

Common Ground: Ceramics in Southern California 1945-1975

November 12, 2011 – March 31, 2012



Caption: Elaine Katzer on Jack and Susan Peterson Kick Wheel in San Pedro, CA. © 1962 George Armstrong

Armory Center for the Arts

Speaking in Tongues: The Art of Wallace Berman and Robert Heinecken

October 1, 2011 – January 22, 2012



Caption: *Untitled*, date unknown, Wallace Berman. Negative verifax collage. 10 x 8 1/2 inches. Image courtesy of the estate of Wallace Berman, Michael Kohn Gallery, Los Angeles, CA. Photograph courtesy of Karl Puchlik

Autry National Center

Art Along the Hyphen: The Mexican-American Generation
October 14, 2011 – January 8, 2012



Caption: *Fallen Warrior*, 1969, Dora de Larios. Bronze. 27 x 11 x 5 in. Private Collection. Photograph by Dale Strumpell

California African American Museum (CAAM)

Places of Validation, Art, and Progression
September 29, 2011 – April 12, 2012



Caption: *The Door (Admissions Office)*, 1969, David Hammons. Wood, acrylic sheet and pigment construction. 79 x 48 x 15 in. Collection of the California African American Foundation. Courtesy of the California African American Museum

California Institute of the Arts (CalArts) / REDCAT

The Experimental Impulse: Los Angeles Art from 1945 to 1980
November 18, 2011 – January 15, 2012



Caption: An intermedia performance at CalArts, 1983. Courtesy of the CalArts Archive

Craft and Folk Art Museum(CAFAM), (with Craft in America)

Golden State of Craft: California 1960 -1985
September 25, 2011 – January 8, 2012



Caption: Weaver Jim Bassler with tapestry, 1982. Courtesy of Jim Brassler. Photograph by Don Reese

California Museum of Photography, University of California, Riverside

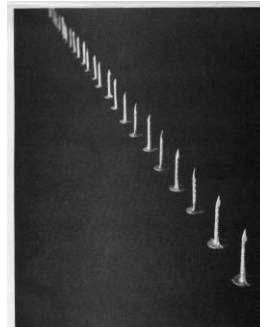
Seismic Shift: Lewis Baltz, Joe Deal and California Landscape Photography, 1944 - 1984
October 1, 2011 – December 31, 2011



Caption: *West Wall, Semicoa, 333 McCormick, Costa Mesa* (from New Industrial Parks near Irvine, California), 1974, Lewis Baltz. Gelatin silver print., 11 x 13 in. Collection of Orange County Museum of Art. © Lewis Baltz and courtesy Gallery Luisotti, Santa Monica

Chapman University, Guggenheim Gallery

Everyman's Infinite Art
November 28, 2011 – January 14, 2012



Caption: The Everyman's Art Exhibition at Chapman University. Harold Gregor. © Harold Gregor 2011.

Chinese American Museum

Breaking Ground: Chinese -American Architects in Los Angeles (1945-1980)

January 19, 2012 – June 3, 2012



Caption: *Choy Residence*, Julius Shulman. Used with permission. Julius Shulman Photography Archive, Research Library at the Getty Research Institute (2004.R.10). © J. Paul Getty Trust.

Crossroads School, Sam Francis Gallery

She Accepts the Proposition: Women Gallerists and the Redefinition of Art in Los Angeles, 1967-1978

October 1, 2011 – November 23, 2011



Caption: *A Congruent Reality* at San Francisco Art Institute. Time based perceptual/conceptual event (conscious presence within the continuum of time), Eugenia Butler. Text on aluminum plate, 8 x 64 in. Courtesy of Eugenia P. Butler Estate.

Eames House Foundation

Indoor Ecologies: The Evolution of the Eames House Living Room

October 1, 2011 – April 30, 2012



Caption: Charles and Ray Eames on a motorcycle, 1948. © 2011 Eames Office, LLC (eamesoffice.com).

Fisher Museum of Art, University of Southern California

Sight Specific: LACPS and the Politics of Community

January 11, 2012 - April 7, 2012



Caption: John Wood and Robert Heinecken Exhibition Opening at LACPS from the series, "A Moment in Photo History", 1983. Chromogenic development print. 11 x 14 in. Collection of the Artist.

Fowler Museum at UCLA, (with UCLA Chicano Studies Research Center)

Mapping Another L.A.: The Chicano Art Movement

October 16, 2011 – February 26, 2012



Caption: The Great Wall of Los Angeles, Work in Progress, 1980, Judith F. Baca. Mural Documentation. Courtesy of the Social & Public Art Resource Center. © SPARC

Fowler Museum at UCLA, (with UCLA Chicano Studies Research Center)

Icons of the Invisible: Oscar Castillo

September 25, 2011 – February 26, 2012



Caption: Oscar Castillo, '47 Chevy in Wilmington, California, 1972, Color photograph © Oscar Castillo

The Getty Research Institute

Greetings from L.A.: Artists and Publics 1945–1980
October 1, 2011–February 5, 2012



Caption: *Artists' Tower*, 1966, Charles Brittin and Mark Di Suvero. Chromogenic process. Charles Brittin Archive, Research Library, The Getty Research Institute. Used with permission. © J. Paul Getty Trust

The J. Paul Getty Museum

Pacific Standard Time: Crosscurrents in L.A. Painting and Sculpture 1950-1970
October 1, 2011 – February 5, 2012



Caption: *Freeway*, 1966, Vija Celmins. Oil on canvas. 17 1/2 x 26 3/8 in. Collection of Harold Cook, Ph.D. Image courtesy McKee Gallery, New York. © Vija Celmins

The GRAMMY Museum

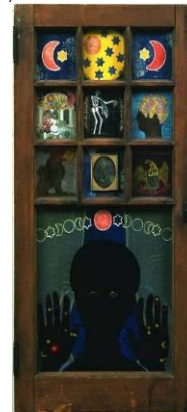
Trouble In Paradise: Music and Los Angeles 1945-1975
February 22, 2012 – April 2, 2012



Caption: Search for weapons, Watts Riots, 1966, Cliff Wesselman. Black and white photographic print. Herald Examiner Collection/Los Angeles Public Library

Hammer Museum, University of California, Los Angeles

Now Dig This! Art and Black Los Angeles 1960-1980
October 2, 2011 – January 8, 2012



Caption: *Black Girl's Window*, 1969, Betye Saar. Mixed media assemblage. 35 3/4 x 18 x 1 1/2 in. Collection of the artist. Courtesy of Michael Rosenfeld Gallery, LLC, New York, NY

Huntington Library, Arts Collections, and Botanical Gardens

The House that Sam Built: Sam Maloof and Art in the Pomona Valley, 1945–1985
September 24, 2011 – January 30, 2012



Caption: Number 4, 1968, Karl Benjamin. The Huntington Library Art Collections, and Botanical Gardens
Double Music Stand, 1972, Sam Maloof. The Huntington Library Art Collections, and Botanical Gardens

Japanese American National Museum

Drawing the Line: Japanese American Art, Design and Activism in Post-War Los Angeles
October 15, 2011– February 19, 2012



Caption: *Oxnard Madame*, 1961, Matsumi "Mike" Kanemitsu. Lithography (paper and ink), edition 14/25. 15 x 18 in. Gift of Margot H. Leavin, Japanese American National Museum. © Japanese American National Museum

California State University Northridge Art Galleries

Identity and Affirmation: Post War African American Photography
October 23, 2011 – December 10, 2011



Caption: *The Mad Hatters*, ca. 1964, Harry Adams. Institute for Arts and Media, California State University, Northridge.

Laguna Art Museum

Best Kept Secret: UCI and the Development of Contemporary Art in Southern California, 1964-1971
October 30, 2011 – January 22, 2012



Caption: *A Spatial Occurrence, the Levitation of a Human Being*, 1971, Tony DeLap. Performance at Duchamp Festival, University of California Irvine. Photographed in DeLap studio, Costa Mesa, prior to performance. Photograph by Alfred Lucjeans. Courtesy of the artist.

LA><ART

John Outterbridge
September 10 - October 22, 2011



Caption: *Ragged Bar Code*, 2008, John Outterbridge. Mixed Media, 58 x 8 x 2.5 inches. Courtesy of the artist and LAXART, Los Angeles. Photo Credit: Tilton Gallery, New York. © John Outterbridge.

LAND (Los Angeles Nomadic Division)

Los Angeles, CA
Perpetual Conceptual: Echoes of Eugenia Butler
January 6, 2012 – March 4, 2012



Caption: *Staple Cheese, A Race*, 1960, Dieter Roth. Cheese stuffed into 37 suitcases. Image courtesy of Eugenia P. Butler Estate
Copyright Notice: © Eugenia P. Butler Estate.

Long Beach Museum of Art (LBMA)

Exchange and Evolution: World Wide Video Long Beach 1974-1999
October 7, 2011 – February 12, 2012



Caption: *City of Angels*, 1983, Marina Abramovic/Ulay. Single-channel color video with sound, 21:37 min. From the Continental Video Series. Courtesy of the artist, Electronic Arts Intermix, New York, and Sean Kelly Gallery, New York. Photographed by Marina Abramovic/Ulay. © Marina Abramovic/Ulay

LACE (Los Angeles Contemporary Exhibitions)

Los Angeles Goes Live: Performance Art in Southern California 1970 – 1983
September 27, 2011 – January 29, 2012



Caption: *Hey! Baby, Chickey!*, January 29, 1982, Nina Sobell. © LACE

Los Angeles County Museum of Art (LACMA)

Edward Kienholz: Five Car Stud 1969 – 1972, Revisited
September 4, 2011 – January 15, 2012



Caption: *Five Car Stud*, 1969-72, Edward Kienholz. Collection of Kawamura Memorial Museum of Art, Sakura, Japan. Courtesy of L.A. Louver, Venice, CA and The Pace Gallery, New York. © Edward Kienholz.

Los Angeles County Museum of Art (LACMA)

Asco: Elite of the Obscure, A Retrospective, 1972 - 1987
September 4, 2011 – December 4, 2011



Caption: *Instant Mural*, 1974, Asco. Performance documentation, color photograph (left to right: Gronk and Patssi Valdez). Courtesy of Harry Gamboa Jr. Photo: © 1974 Harry Gamboa Jr.

Los Angeles County Museum of Art (LACMA), with UCLA Chicano Studies Research Center

Mural Remix: Sandra de la Loza
October 15, 2011 – January 22, 2012



Caption: *Mural Remix; Untitled*, Ernesto de la Loza and Richard "Lil Man" Ruiz, ca. 1972, (*After the Riots*), 2010, Sandra de la Loza. Duratrans in Lightbox. 48 x 48 in. Collection of the artist

Los Angeles County Museum of Art (LACMA)

California Design, 1930–1965: "Living in a Modern Way"
October 1, 2011–March 25, 2012



Caption: Eames Storage Unit, 1951-52, Charles Eames and Ray Eames, manufactured by Herman Miller Furniture Company. Zinc-plated steel, birch-faced and plastic-coated plywood, lacquered particle board, and rubber. 69 x 47 x 16 in. Gift of Mr. Sid Avery and Mr. James Corcoran. © 2010 Museum Associates/LACMA.

Los Angeles County Museum of Art (LACMA)

Maria Nordman Filmroom: Smoke 1967 – Present
September 4, 2011 – January 15, 2012



Caption: *Film Room: Smoke*, 1967- Present, Maria Nordman. Photo: Courtesy of the Fundação de Serralves, Museu de Arte Contemporânea, Porto, Portugal.

Los Angeles Filmforum

Alternative Projections: Experimental Film in Los Angeles 1945-1980
October 9, 2011 – May 12, 2012



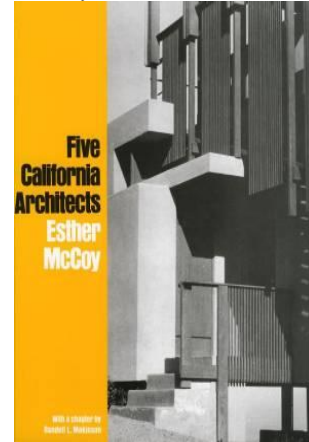
Caption: *Foregrounds*, 1978, Pat O'Neil. 16 mm film, color, sound. 14 minutes. © Pat O'Neill

Los Angeles Municipal Art Gallery, (with City of Los Angeles Department of Cultural Affairs)
Civic Virtue: The Impact of the Los Angeles Municipal Art Gallery and the Watts Towers Arts Center
 December 15, 2011 to February 12, 2012



Caption: Paul Williams and Anthony Quinn, 1957. Herald-Examiner Collection. Los Angeles Public Library

MAK Center for Art and Architecture at the Schindler House
Sympathetic Seeing: Esther McCoy and the Heart of American Modernist Architecture and Design
 September 28, 2011 – January 8, 2011



Caption: Five California Architects, 1960, Hennessy + Ingalls and Esther McCoy. Courtesy of Hennessy + Ingalls, Inc.

Sam and Alfreda Maloof Foundation for Arts and Crafts
In Words and Wood: Sam Maloof, Bob Stocksdale and Ed Moulthrop
 October 1, 2011 – January 28, 2012



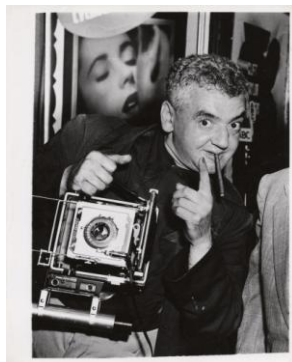
Caption: Footed Ellipsoidal Bowl, ca. 1980s, Bob Stocksdale (1913-2002). Turned ebony from Ceylon, 3 1/2 x 6 3/4 in.; 5 1/2 in. diameter.

Mingei International Museum
San Diego's Craft Revolution – From Post-War Modern to California Design
 October 16, 2011 – April 15, 2012



Caption: Bowl, ca. 1959, Rhoda Lopez. Stoneware. 10 1/2 x 14 1/2 in. Gift of Horton & Chiyo Telford

Museum of Contemporary Art (MOCA)
Naked Hollywood: Weegee in Los Angeles
 November 13, 2011 – February 27, 2012



Caption: *Hollywood*, ca. 1950, Unidentified Photographer. International Center of Photography, Bequest of Wilma Wilcox, 1993. © Weegee/International Center of Photography/Getty Images

Museum of Contemporary Art (MOCA)
 The Geffen Contemporary
Under the Big Black Sun: California Art 1974-1981
 October 2, 2011 – February 13, 2012



Caption: *It Terrifies Me...*, 1980, Raymond Pettibon. Print on paper. 11 x 8 1/2 in. Collection of The Museum of Contemporary Art, Los Angeles, gift of Barry Sloane. Courtesy Regen Projects, Los Angeles, CA

Museum of Contemporary Art San Diego (MCASD)

Phenomenal: California Light, Space, Surface
September 25, 2011 – January 22, 2012



Caption: *Diamond Column*, 1978, DeWain Valentine. Polyester resin. 91 1/2 x 44 x 12in. Photography by Philipp Scholz Rittermann. Collection of the Museum of Contemporary Art San Diego, Museum purchase

Museum of Latin American Art (MOLAA)

MEX/LA: Mexican Modernism(s) in Los Angeles 1930-1985
September 18, 2011 – January 29, 2012



Caption: *Sad Girl*, 1979, John Valadez. Lena Torslow Hansen Collection, Los Angeles, CA. © John Valadez

Natural History Museum of Los Angeles County

Artistic Evolution: Southern California Artists at the Natural History Museum of Los Angeles County, 1945-1963
October 2, 2011 – January 15, 2012



Caption: *Sophia*, 1960, Billy Al Bengston. Oil on canvas, 21" x 21". Courtesy of Billy Al Bengston Artist Studio Holdings. Photograph by Samuel Freeman. © Billy Al Bengston.

Norton Simon Museum

Proof: The Rise of Printmaking in Southern California
October 1, 2011 – April 2, 2012



Caption: *Untitled*, 1965, John Altoon. Lithograph. 22 x 30 in. Norton Simon Museum, Anonymous Gift, 1967. © 2010 Estate of John Altoon

ONE National Gay & Lesbian Archives

Two Venues:
Cruising the Archive: Queer Art and Culture in Los Angeles 1945 - 1980: Wink Wink (West Hollywood) and *Cruising the Archive: Queer Art and Culture in Los Angeles 1945 - 1980: Rare Looks* (Los Angeles)
October 1, 2011 – April 1, 2012 / October 1, 2011 – May 31, 2012



Caption: *Untitled (Sailor with Schlitz)*, 1952, Sidney Bronstein. Oil on canvas. 12 x 9 in. Courtesy of the ONE National Gay and Lesbian Archives. © ONE National Gay and Lesbian Archives

Orange County Museum of Art, (with University of California Berkeley Art Museum and Pacific Film Archive)

State of Mind: New California Art Circa 1970
October 9, 2011 – January 22, 2012



Caption: At 7:45 p.m. I was shot in the left arm by a friend. The bullet was a copper jacket .22 long rifle. My friend was standing about fifteen feet from me., November 19, 1971, Chris Burden. Performance at F Space, Santa Ana, CA. Photo courtesy of University of California, Berkeley Art Museum and Pacific Film Archive; gift of the Naify Family
[Please note: Descriptive text MUST accompany image]

Otis College of Art and Design Ben Maltz Gallery

Doin' It in Public: Feminism and Art at the Woman's Building
October 1, 2011 – January 28, 2012



Caption: Judy Chicago, close up of a photo from the first Feminist Studio Workshop brochure, 1973, photographer unknown, concept by Sheila Levrant de Bretteville. Offset printing. Part of Woman's Building Image Archive at Otis College of Art and Design. © The Woman's Building

Pacific Asia Museum

46 N. Los Robles: A History of the Pasadena Art Museum
November 18, 2011 – April 8, 2012



Caption: *Figurine Cup III*, 1970. Ken Price. © Ken Price and Gemini G.E.L.

Palm Springs Art Museum

Backyard Oasis: The Swimming Pool in Southern California Photography, 1945-1982
January 21, 2012 – May 27, 2012



Caption: *Edgar J. Kaufmann House, Palm Springs, California, 1947*, Julius Shulman. Gelatin silver print. Collection Palm Springs Art Museum, purchase. Used with permission. Julius Shulman Photography Archive, Research Library at the Getty Research Institute. © J. Paul Getty Trust.

Pasadena Museum of California Art

L.A. Raw: Abject Expressionism in Los Angeles, 1945-1980, From Rico Lebrun to Paul McCarthy
January 22, 2012 – May 20, 2012



Caption: *My Lai*, 1968, Hans Burkhardt. Oil assemblage with skulls on canvas. 77 x 115 in. Jack Rutberg Fine Arts, Los Angeles. © Hans G and Thordis W. Burkhardt Foundation

Pomona College Museum of Art

It Happened at Pomona: Art at the Edge of Los Angeles, 1969 - 1973
August 30, 2011 – May 13, 2012



Caption: *Untitled*, 1972, Hirokazu Kosaka. Performance at Pomona College. Photograph courtesy of the artist

Santa Barbara Museum of Art

Pasadena to Santa Barbara: A Selected History of Art in Southern California, 1951-1969
February 11, 2012 – May 6, 2012



Caption: *FS #1*, 1961, Karl Benjamin. Oil on panel, 42 x 50 in. Santa Barbara Museum of Art, Museum Purchase. © Karl Benjamin, reproduced by permission.

Santa Monica Museum of Art

Beatrice Wood: Career Woman—Drawings, Paintings, Vessels, and Objects

September 10, 2011 – March 3, 2012



Caption: *Chocolate and Young Men*, ca. 1990-1993, Beatrice Wood. Earthenware. 21 x 10 1/2. Collection of Dr. and Mrs. William P. Klein, Newport Beach, CA. © Beatrice Wood Center for the Arts/Happy Valley Foundation

Scripps College, Ruth Chandler Williamson Gallery

Clay's Tectonic Shift: John Mason, Ken Price, and Peter Voukos, 1956-1968
January 21, 2012 – April 8, 2012



Caption: *Sculpture*, Peter Voukos, 1956. Stoneware. 35 x 21 x 21 in. Scripps College, Claremont, CA. Gift of Mr. and Mrs. Fred Marer

UCLA Film & Television Archive

L.A. Rebellion: Creating a New Black Cinema

October 7, 2011 – December 17, 2011



Caption: *Ashes and Embers*, 1982, Haile Gerima. Film, 120 min

University Art Gallery, University of California, Irvine

The Radicalization of a '50s Housewife: A Solo Project by Barbara T. Smith

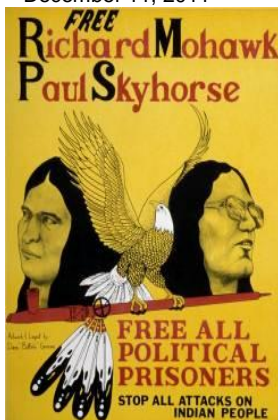
October 6, 2011 – December 3, 2011



Caption: *Birthdaze*, 1981, Barbara T. Smith. Performance documentation. © Barbara T. Smith.

University Art Museum, California State University, Long Beach (CSULB), (with The Center for the Study of Political Graphics)

Peace Press Graphics 1967–1987: Art in the Pursuit of Social Change
September 10, 2011 – December 11, 2011



Caption: *Free Richard Mohawk and Paul Skyhorse*, 1976-78, Peace Press, Dave "Buffalo" Greene. Offset print, 23 x 18 in.

Museum of Art, Design and Architecture, University of California, Santa Barbara

Carefree California: Cliff May and the Romance of the Ranch, 1920 - 1960
February 26, 2012 – June 30, 2012



Caption: *Philbin Residence: Perspective*, 1959-1960, Cliff May. Gouache on board. 20 3/4 x 25 3/4 in. Cliff May Collection, Architecture and Design Collection, University Art Museum, UC Santa Barbara

Vincent Price Art Museum, East Los Angeles College

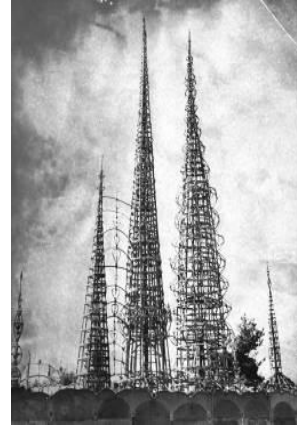
'Round the Clock: Chinese-American Artists Working in Los Angeles
January 21, 2011 – April 21, 2012



Caption: *Olvera Street Grocery Store*, Not dated, Jake Lee. Watercolor on paper. 19 x 28 in. Chinese American Museum Collection. © Chinese American Museum

Watts Tower Arts Center (WTAC), (with City of Los Angeles Department of Cultural Affairs)

Civic Virtue: The Impact of the Los Angeles Municipal Art Gallery and the Watts Towers Arts Center
December 17, 2011 to February 12, 2012



Caption: *Simon Rodia's Towers, Los Angeles, CA, 1967*, Julius Shulman. Gelatin silver print. Used with permission. Julius Shulman Photography Archive, Research Library at the Getty Research Institute. © J. Paul Getty Trust

Frederick R. Weisman Museum of Art, Pepperdine University

California Art: Selections from the Frederick R. Weisman Art Foundation

August 27, 2011 – December 4, 2011



Caption: *Klenator Draculas*, 1977, Billy Al Bengston (b. 1934). Acrylic on canvas. : 60 x 56-1/8 in. Collection of Frederick R. Weisman Art Foundation, Los Angeles. Photograph by Michael Smith. © Billy Al Bengston.